

**PART NUMBER****PFR57-106****DESCRIPTION****REAR TRAILING ARM FRONT BUSH****INSTALLATION GUIDE****Contents (parts per pack):**

- |                           |                             |
|---------------------------|-----------------------------|
| 2 x Polyurethane A Bushes | 4 x Phosphor Bronze Bearing |
| 2 x Polyurethane B Bushes | 2 x Stainless Steel Sleeve  |
| 2 x Plated Steel Washer   | 1 x PTFE/Silicone Grease    |

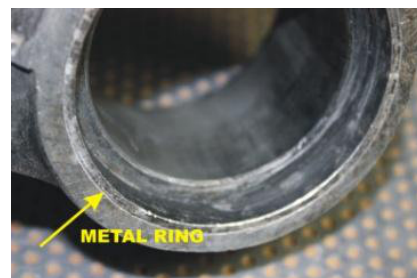
Please read the complete fitting instructions and check package components before fitment. These fitting instructions are to be used as a guide and in conjunction with workshop manual.

It is recommended that:

- all work to be carried out by a licensed technician;
- all safety precautions adhered to;
- wheel alignment to be checked and adjusted as required after any suspension work.
- All fasteners must be tensioned to manufacturer's torque settings.

**Fitting Instructions:**

1. Burn out original rubber parts and remove all the parts that are left except the two outer metal rings, one each side of the hole.
2. Save the centre metal sleeve to use for assembly.
3. Assemble the bush, place one of the phosphorus bronze bearings into each of the polyurethane parts, push them in from the centre part leaving them flush with the polyurethane.
4. Fit the bushes into the arm making sure part A fits towards the chassis, clean the saved inner metal sleeve, apply some grease to the sleeve bearings and fit this sleeve into part A of the bush.
5. Fit the part B of the bush into the arm after applying some grease to the bearing, put the washer onto the new special stainless steel sleeve and fit into part B of the bush.
6. Refit the arm onto the car taking note to line the key way up on the chassis, apply some thread lock on to the bolt and tighten to manufactures specification.
7. Carry out geometry check





## Chassis →

